

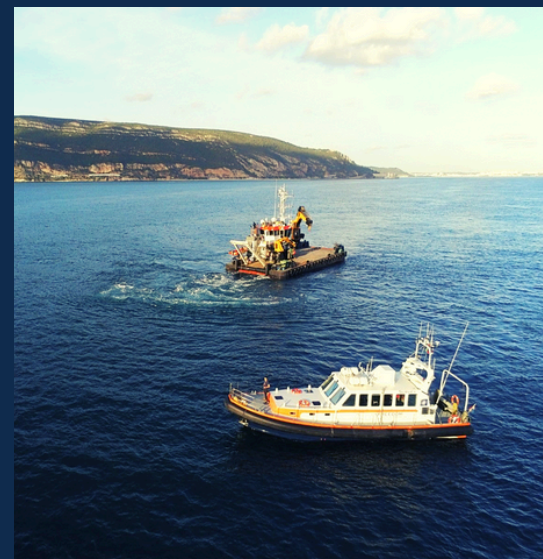


**BRAVEHEART  
MARINE**



# FREEDOM

*Specifications*



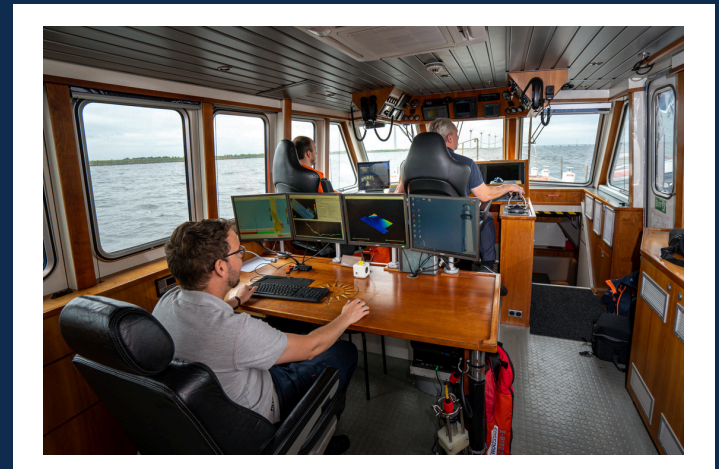
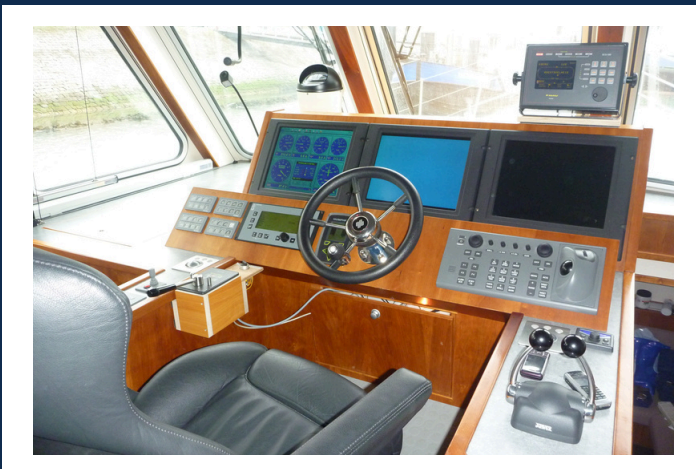


# SURVEY & CREW TENDER VESSEL

## FREEDOM

### MAIN FEATURES

Length	16.40 meters	MMSI	246548000
Breadth o.a.	5.00 meters	IMO	9522346
Draft	1.30 meter	Max Speed	17 knots
Gross tonnage	36 tons	Engines	2 x Volvo Penta D12
Classification	Lloyd's Register NL	Power output	2 x 475 HP
Year of build	2008	Fuel capacity	5.000 liters
Call Sign	PBQI	Fresh water capacity	1.000 liters
		Grey water capacity	500 liters



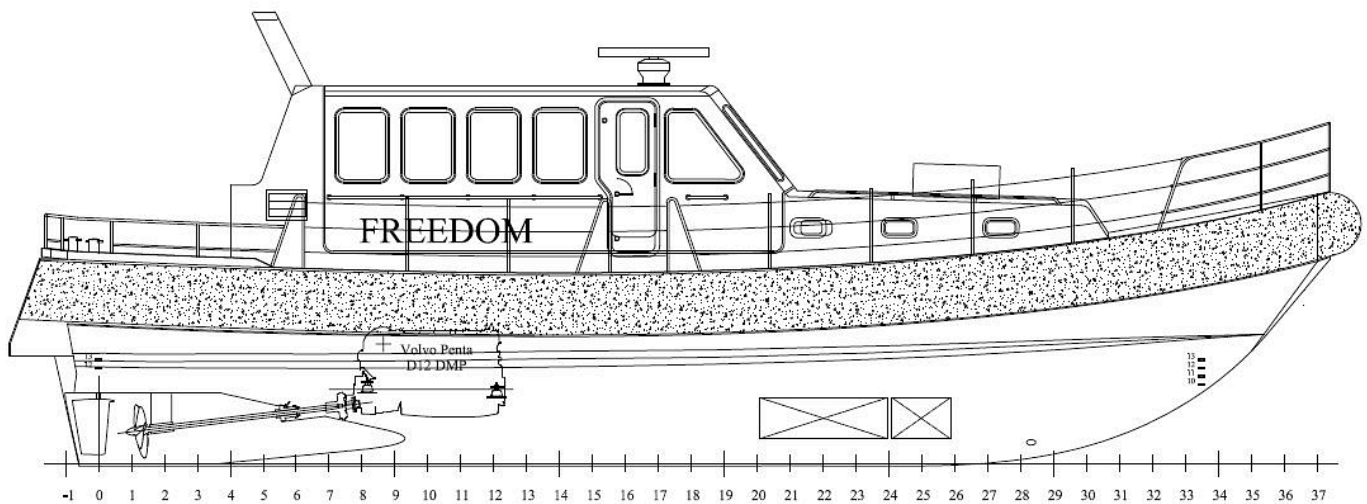
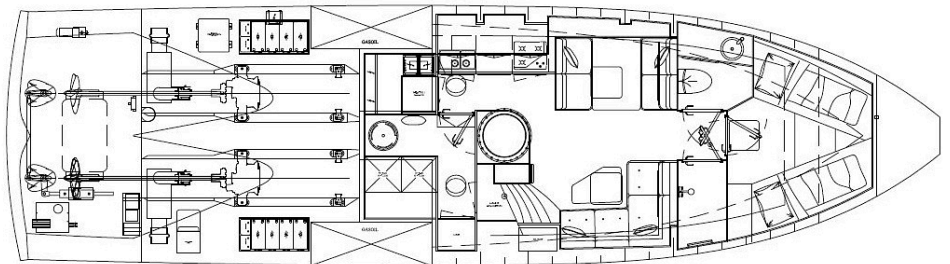
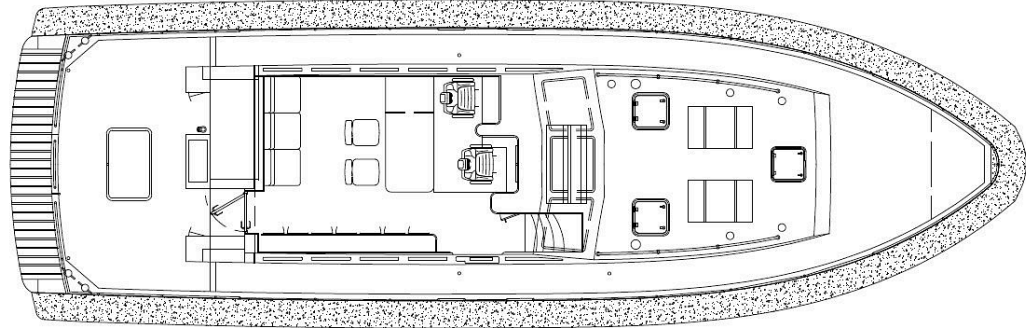
# GENERAL ARRANGEMENT

DESIGNED FOR BOTH  
SURVEY AND CREW TENDER  
OPERATIONS.

- CTV up to 6 pax
- 1 toilet, galley & shower
- 2 cabins with 2 berths total
- 1 moon pool 700 mm diameter
- Survey desk
- Side pole available
- A-Frame
- Trading Area: 30 miles

## SURVEY EQUIPMENT

SeaBat T50-R Multibeam  
POSMV Applanix v5  
Valeport SVP & mini SVS



ENQUIRE TODAY!

[info@braveheartmarine.com](mailto:info@braveheartmarine.com)