



**BRAVEHEART
MARINE**



FRIENDSHIP II

Specifications



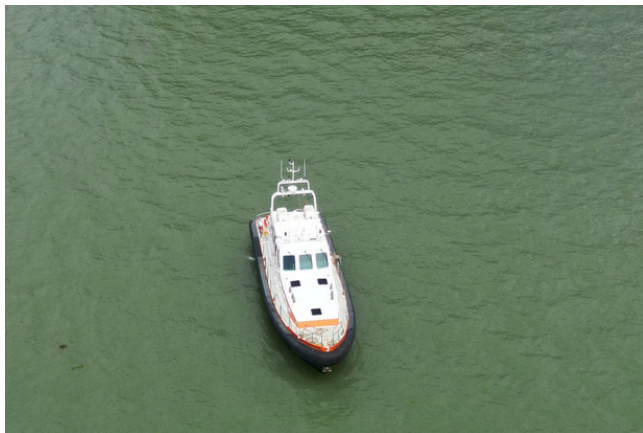


SURVEY & CREW TENDER VESSEL

— FRIENDSHIP II —

MAIN FEATURES

Length	15.00 meters	MMSI	235087045
Breadth o.a.	3.70 meters	Max Speed	13 knots
Draft	1.20 meter	Engines	2 x Volvo Penta
Gross tonnage	22 tons	Power output	2 x 485 HP
Flag state	United Kingdom	Fuel capacity	3.000 liters
Year of build	2000	Fresh water capacity	1.000 liters
Call Sign	2EPG9	Grey water capacity	500 liters



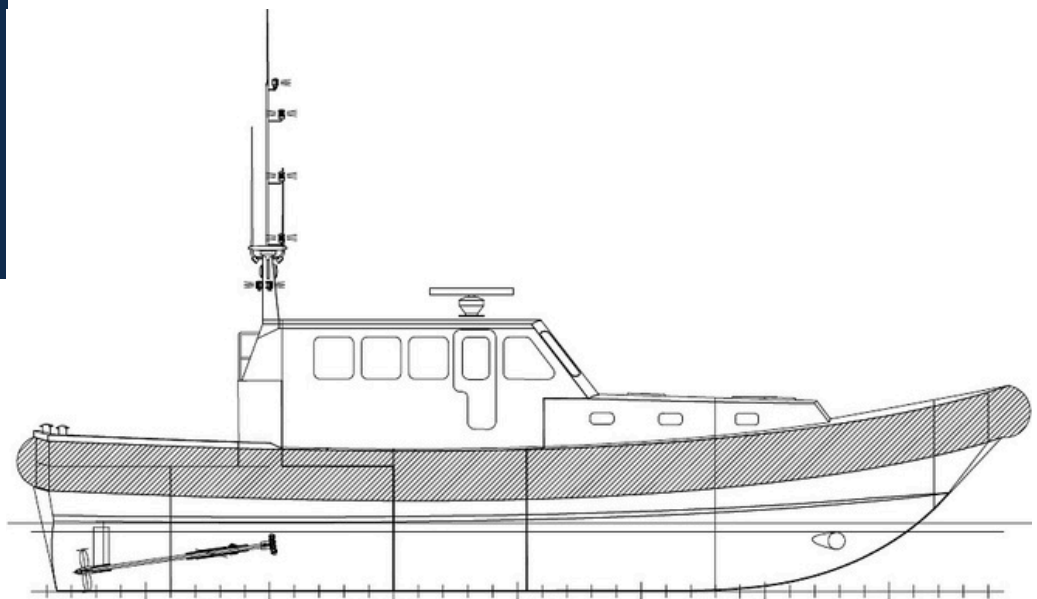
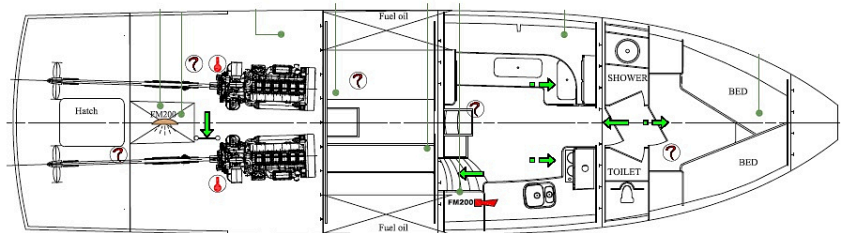
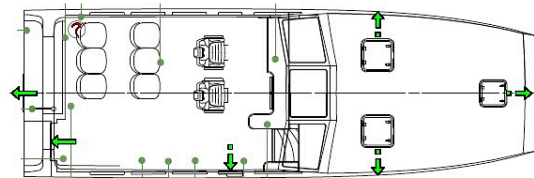
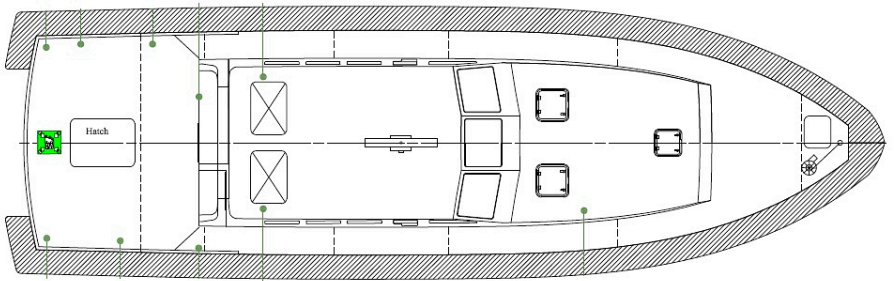
GENERAL ARRANGEMENT

EQUIPPED FOR BOTH
SURVEY AND CREW TENDER
OPERATIONS.

- CTV up to 6 pax
- 1 toilet, galley & shower
- 2 cabins with 2 berths total
- 1 moon pool 650 mm diameter
- Survey desk
- Side pole available
- Trading Area: inland vessel

SURVEY EQUIPMENT

Survey equipment available
upon request.



ENQUIRE TODAY!

info@braveheartmarine.com